

New Road, Bromyard, Herefordshire

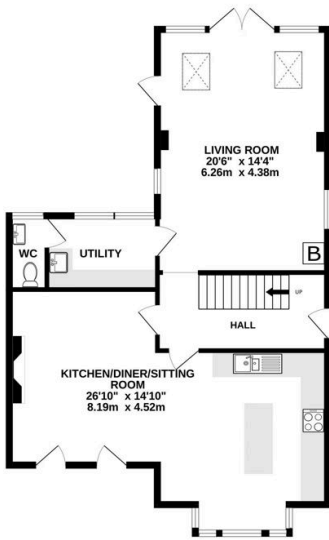
Guide Price £500,000

5 2 1

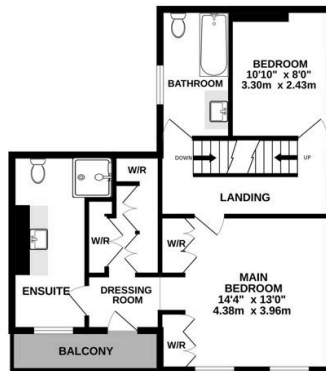


- Beautifully Presented 5 Bedroom Townhouse
- Elevated Position
- Balcony
- Recently Refurbished
- Main Bedroom with Dressing Room & Ensuite
- Period Features
- Kitchen Diner with Island
- Close to Town Centre

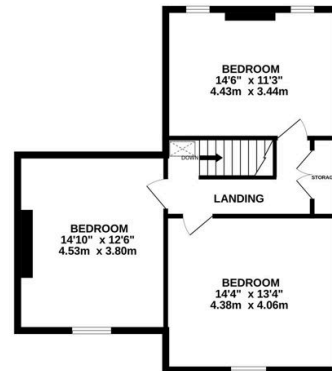
GROUND FLOOR
851 sq.ft. (79.0 sq.m.) approx.



1ST FLOOR
609 sq.ft. (56.6 sq.m.) approx.



2ND FLOOR
611 sq.ft. (56.8 sq.m.) approx.



TOTAL FLOOR AREA : 2071 sq.ft. (192.4 sq.m.) approx.

Whilst every attempt has been made to ensure the accuracy of the floorplan contained here, measurements of doors, windows, rooms and any other items are approximate and no responsibility is taken for any error, omission or mis-statement. This plan is for illustrative purposes only and should be used as such by any prospective purchaser. The services, systems and appliances shown have not been tested and no guarantee as to their operability or efficiency can be given.
Made with Metropix ©2024

A Beautifully Refurbished 5 Bedroom Family Home with an Abundance of Period Features and Modern Styling, Situated within an Elevated Position Close to Bromyard Town Centre